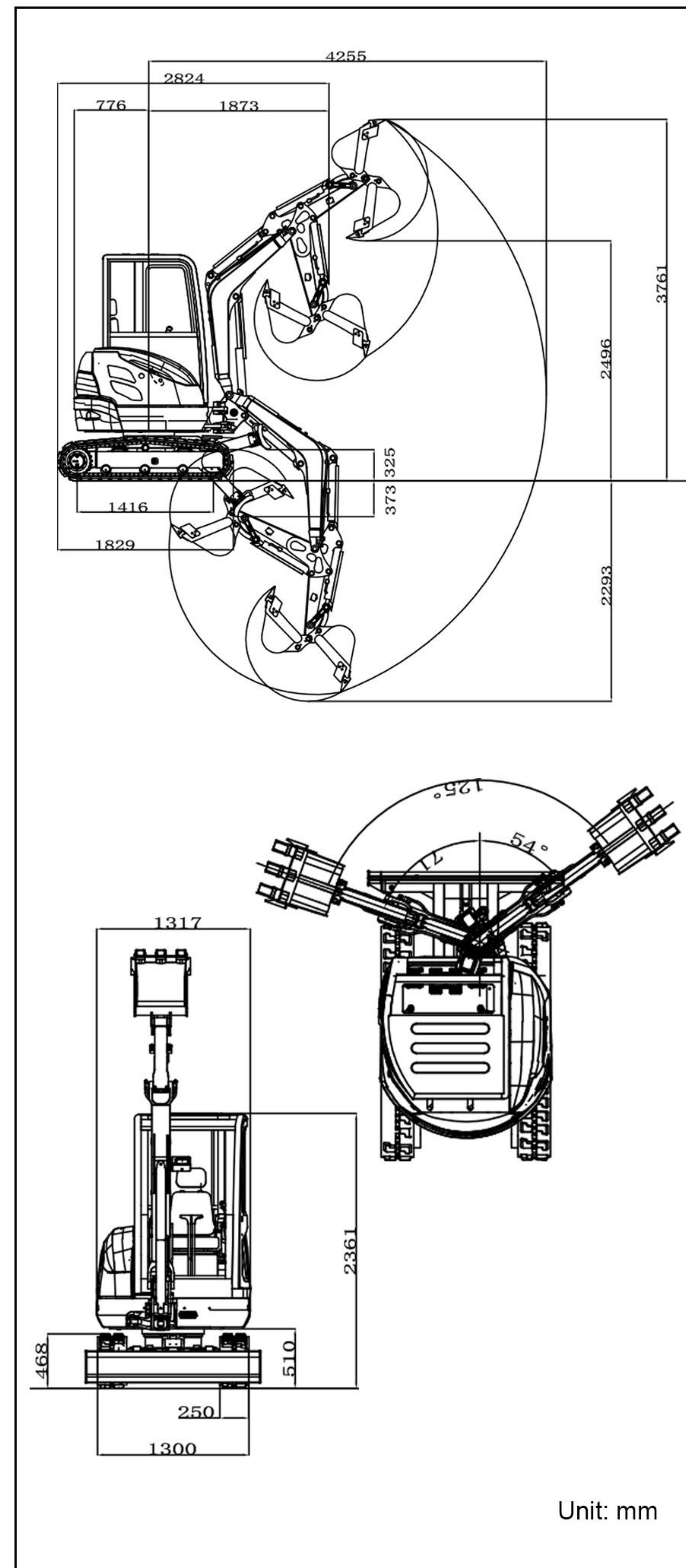


■ SCOPE OF WORK



■ SPECIFICATION

	Model	R22PRO	
Basic parameters	Machine working weight	5366lb	2439kg
	Bucket capacity	1.9ft³	0.054m³
	Travel speed low/high speed	0-0.93/0-1.74mph	0-1.5/0-2.8Km/h
	Gradeability	30%	30%
	Ground pressure	4.8psi	33.4kpa
	Maximum digging force	4136lbf	18.4kn
	Maximum digging radius	167.5in	4255mm
	Maximum digging depth	90.3in	2293mm
	Maximum digging height	148.1in	3761mm
	Maximum unloading height	98.3in	2496mm
Maximum deflection angle	125°	125°	
Track extension range	51.2-59.1in	1300-1500mm	
Engine	Engine brand	Kubota	Kubota
	Engine model	D1105	D1105
	Maximum horsepower	24.4hp	24.8ps
	Maximum power	18.2Kw	18.2Kw
	Maximum speed	3000rpm	3000rpm
	Displacement	0.3gal	1.123L
	Number of cylinders	3	3
	Cooling method	Water-cooled	Water-cooled
	Engine oil change amount	1.1gal	4.2L
	Fuel form	Diesel	Diesel
Fuel grade	0/-10	0/-10	
Theoretical fuel consumption	1.3-1.5L/h	1.3-1.5L/h	
Body	Transport length	111.2in	2824mm
	Transport width	51.2in	1300mm
	Transport height	93in	2361mm
	Counterweight ground clearance	20.1in	510mm
	Bucket width (mm)	17.7in	450mm
	Boom length (mm)	72in	1830mm
	Arm length (mm)	49.2in	1250mm
	Bulldozer blade width (mm)	51.2in	1300mm

■ HYDRAULIC SYSTEM

Main pump type/model	Load sensitive variable piston pump/28	Maximum set pressure (Mpa)	20MPa
Main pump brand	Taifeng	Travel hydraulic motor type	LTM03CDK
Main pump maximum flow (L/min)	67.2	Travel motor brand	Likechuan
Multi-way valve	9-way hydraulic multi-way valve	Motor displacement	11-20ml/r
Multi-way valve brand	Taifeng	Slewing hydraulic motor type	Likechuan
Rated set pressure (Mpa)	18MPa	Displacement	15.1ml/r

- Please read the instruction manual carefully and use the machine correctly.
- Always wear a seat belt when working. (ROPS specifications only)
- If you are operating construction machinery with a machine mass of less than 3 tons, you must take the "Special Training for Vehicle-Mounted Construction Machinery Operation" course beforehand. If the machine mass is 3 tons or more, you must take the "Vehicle-Mounted Construction Machinery Operation Skills Course".
- To prevent breakdowns and accidents, be sure to inspect the machinery regularly.
- Specific voluntary inspections are required to be carried out by an inspection company registered with the Minister of Health, Labor and Welfare or the Director-General of the Labor Standards Inspection Bureau.



RIPPA GROUP

R22PRO



Further improve work efficiency

The R22 PRO, which prides itself on its excellent finish and overwhelming trust, has unveiled its long-awaited crane specifications. While improving work efficiency, it also has environmentally friendly properties such as low fuel efficiency, low vibration, and low noise. The pursuit of driver-centered safety and the use of advanced digital instruments for operability all add to the mature flavor.

NEW MODEL DEBUTS

R22PRO



Comply with European exhaust gas fifth emission standard

Comply with U.S. EPA exhaust emission standards

The machine is equipped with an environmentally friendly engine. It meets Euro V and EPA emission standards, is fuel-efficient, low-noise, and can achieve high power output. Durability, safety and comfort are comprehensively upgraded. Compact design delivers powerful performance. The excellent performance brought by the abundant torque greatly contributes to the improvement of workability.



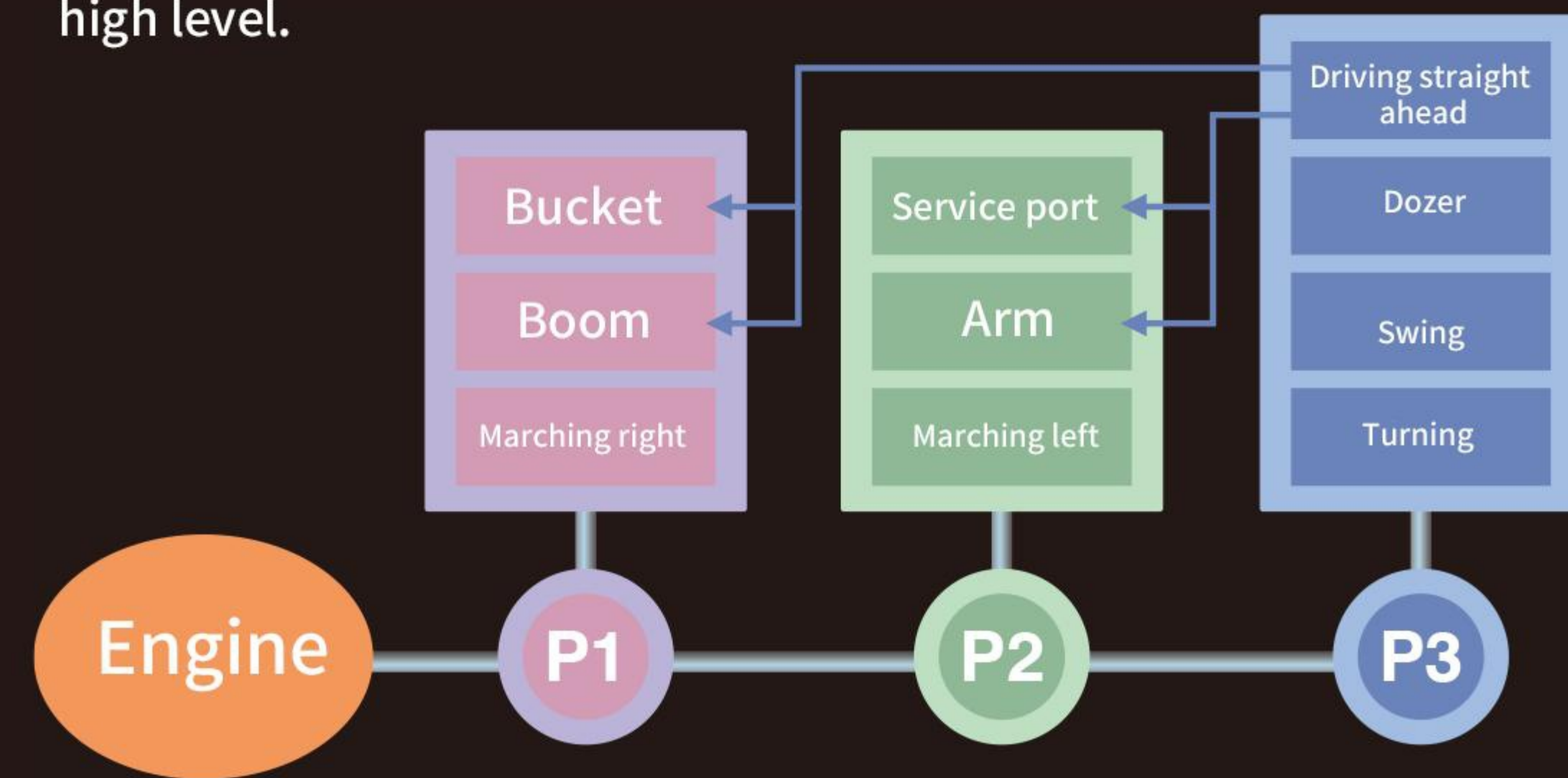
PERFORMANCE

Outstanding power and smooth operation for superior operability

Powerful digging force and 4-way operation

NEW-H · M · S hydraulic system

Adopts a 3-pump system that uses independent pumps for the boom, arm, and swing, and is equipped with a control valve with a wide control range and a variable displacement pump. With smooth, quick, and powerful work, we can meet even the toughest demands at a high level.



● Powerful drilling performance

Concentrates hydraulic power to the front and delivers powerful digging power.

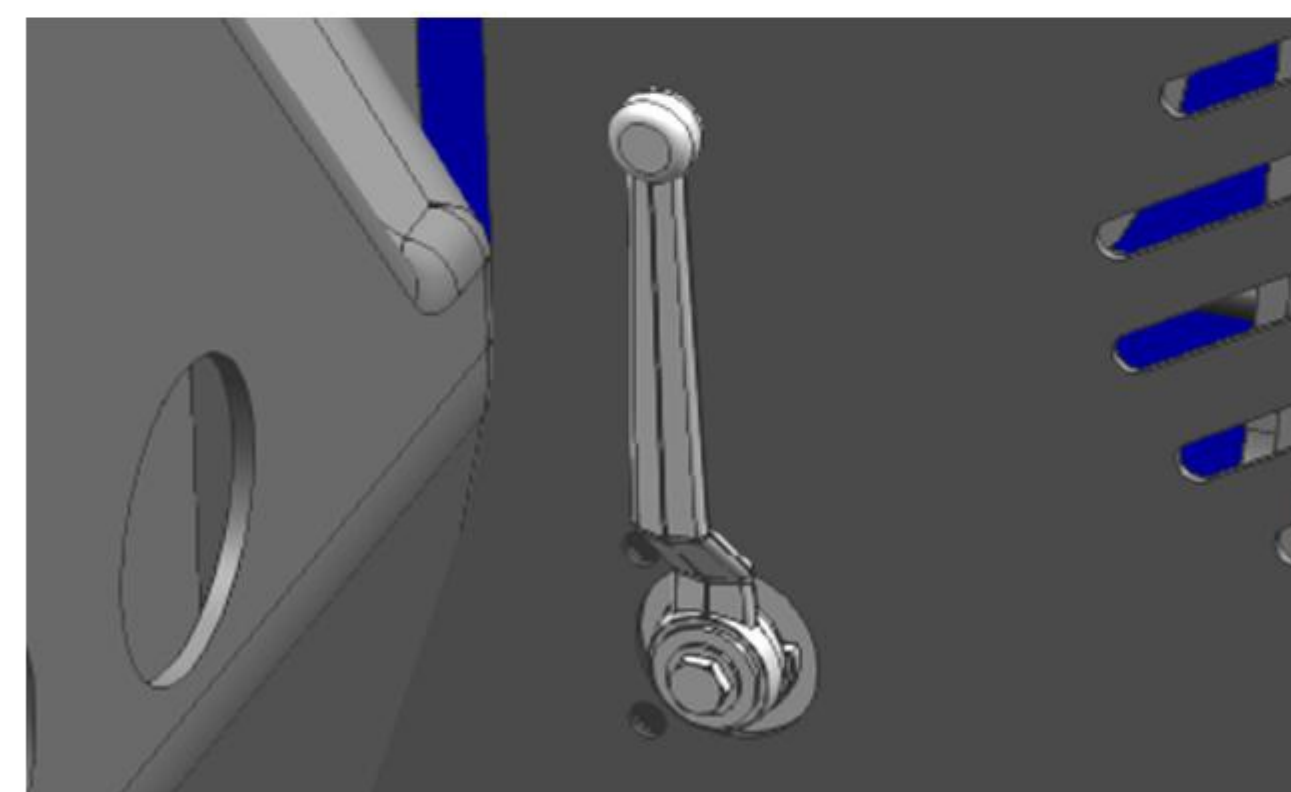
● Equipped with a straight running circuit

Even if you operate the front while driving, there is no meandering or speed change, and stable straight-line driving is achieved.

● 4 consecutive operations possible

The optimal matching of the 3 pump system and hydraulic system allows simultaneous operation of the bucket, boom, arm, and rotation.

● Easy to load and unload on truck



Lawn mower return line reservation

Reserve the mower oil return pipeline, and the pipeline can be switched when the lawn mower auxiliary equipment is used in the future



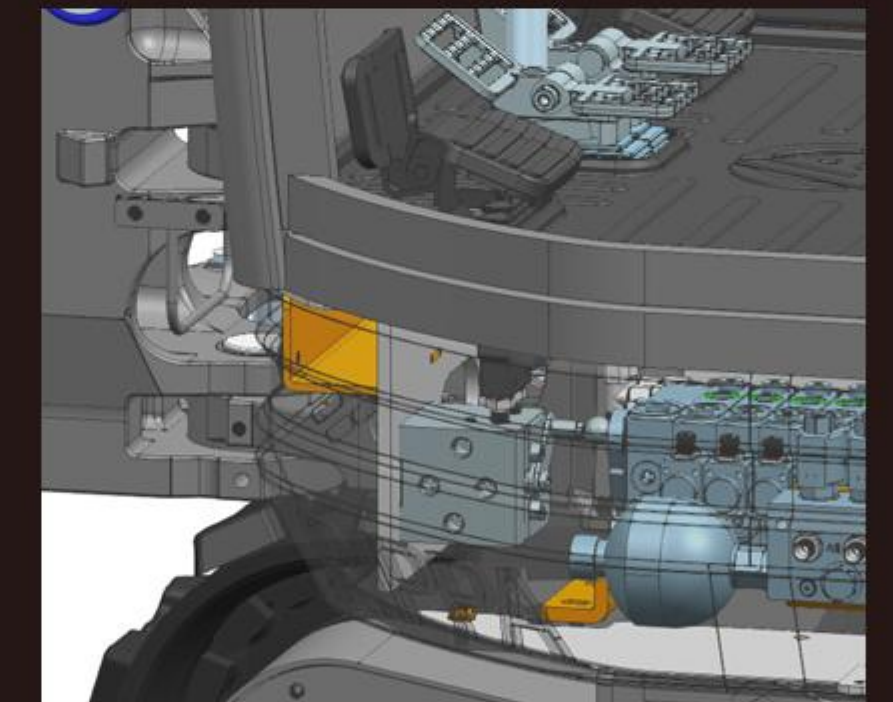
● Options for crane specifications

Bucket cylinder cover

Arm cylinder cover

Forward and reverse hand switching valve

The fore and backhand switching valves realize the switching of ISO-SAE operating modes



Variable leg specifications (optional)

Convenient R22 PRO

Vehicle width when reduced: 1300mm

Variable leg specifications in consideration of situations where the approach road is narrow. It exhibits high stability by being compact at 1,300mm when traveling and transporting, and of course expanding to 1,500mm when working.

Approaching the 3t class

Suitable for 2.5 liters R22 PRO

● Although it is a 2.5t class machine, it exhibits excavation performance and stability approaching that of a 3t class machine. Contributes to increased efficiency with work capacity that exceeds that of its class.

● Achieves speedy front movement by constantly optimizing hydraulic pressure distribution. Combination work can be done extremely smoothly.

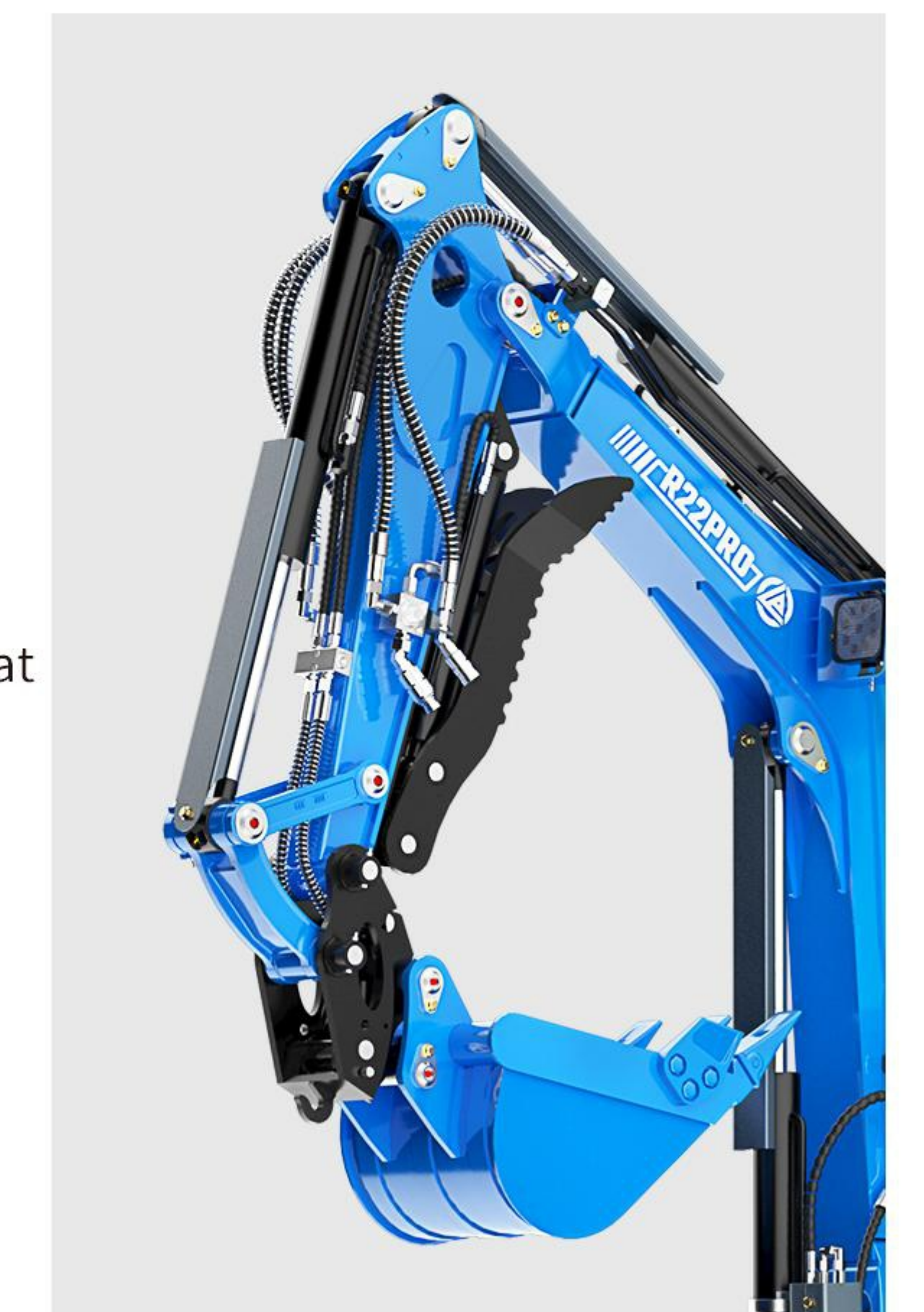
● Designed in pursuit of excellent stability, it is effective when attaching attachments or on sites that involve lifting work.

● The service port has ample oil flow capacity, making it compatible with attachments such as breakers. It responds to harsh use with stable operation. (Service port specification option)



Compact when traveling and transporting
Reduced to 1,300mm

Improved stability during excavation work
Expanded to 1,500mm



*The photos shown are for the catalog with options installed. Ground the work equipment when leaving the site.

WHILE IMPROVING HOMEWORK EFFICIENCY, ACHIEVE LIVABILITY AND SAFETY.

COMFORTABLE CAB

TWO PILLARS / OPG • FOUR PILLARS / OPG CANOPY CAB + SEAT BELT

For TOPS/ROPS that pursue operator safety, please use the Canopi Cabs (with seat belts) corresponding to Do Level I to further pursue safety. Implement a safety structure to protect the operator in case of a fall. The design of the boarding and alighting space is spacious, and getting on and off is also very easy. At the same time, sudden falling objects on site are also protected.

● CAB STANDARD EQUIPMENT

Front tempered glass / front window open / ashtray / heater

※ Tops: protect over protective structures

The structure to protect the driver with the seat belt mounted in the roll. fitted to the test conditions of the mini shovel overturn protection structure.

※ ROPS: roll over protective structures

Structure to protect the driver with seat belt when falling earthenware machine - suitable for test conditions of overturning protection structures.

Explosion-proof valve

The explosion-proof valve can effectively prevent the machine from losing control and improve safety when the pressure of the hydraulic pipeline is too high and the pipeline is broken.



Large cockpit

The cab comes with a fresh air system, windshield washer fluid, and four-corner shock absorbers.



One touch easy operation

Smart big screen

The intelligent large screen displays the machine operating parameters. The error codes and warning lights on the screen immediately notify the operator of overheating, hydraulic system abnormalities and charging system abnormalities.

The simple design, convenient access and easy-to-read indicators enable the operator to always grasp the status of the machine.



FULL OPEN BONNET

The rear and right side bonnets can be opened wide without tools, allowing quick daily inspection and maintenance of the engine and fuel system. In addition, the inspection and maintenance points for the hydraulic system are centrally located on the right side of the aircraft, dramatically improving work efficiency.

OPENABLE WINDSHIELD

The openable design allows the operator to open the windshield when needed to enhance air circulation in the cab, which is particularly suitable for high-temperature working environments and improves the operator's comfort.



LOOSE FEELING!

COMFORTABLE OPERATION

Ensure spacious foot space and support leisurely and smooth operation. The same operating feeling as a mainframe, achieving stress free operation.



Rubber foot pads

The rubber foot mat is easy to clean and dirt-resistant, fits the shape of the fuselage, has a non-slip treatment at the bottom, and a water outlet on the basis of waterproofing, which greatly improves the customer experience.

Herringbone track

Engineering rubber tracks can be matched with high-quality wear-resistant steel tracks for smooth walking



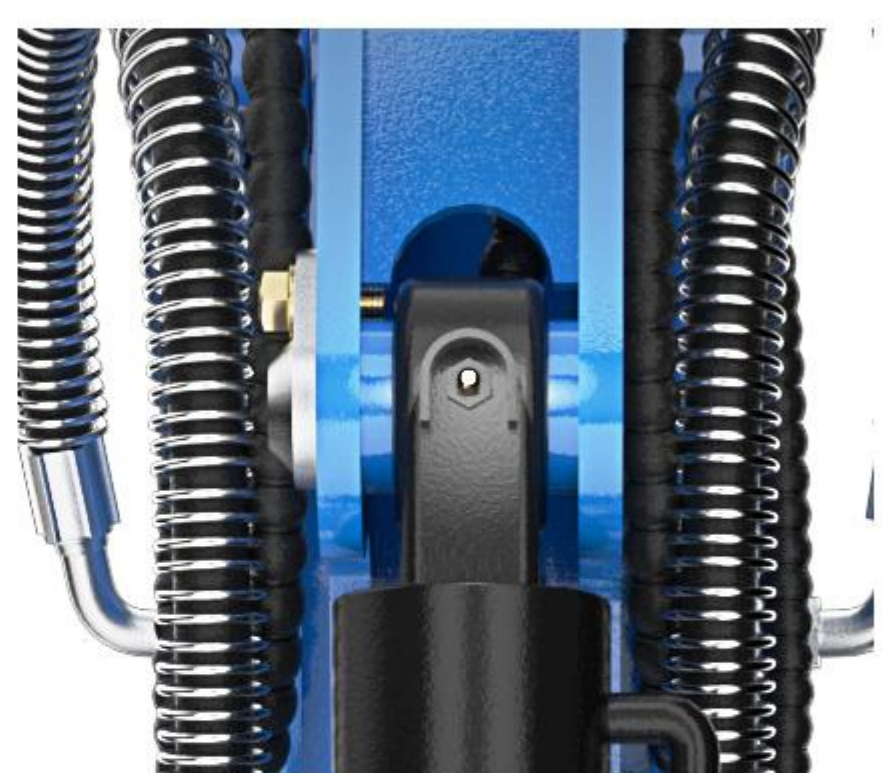
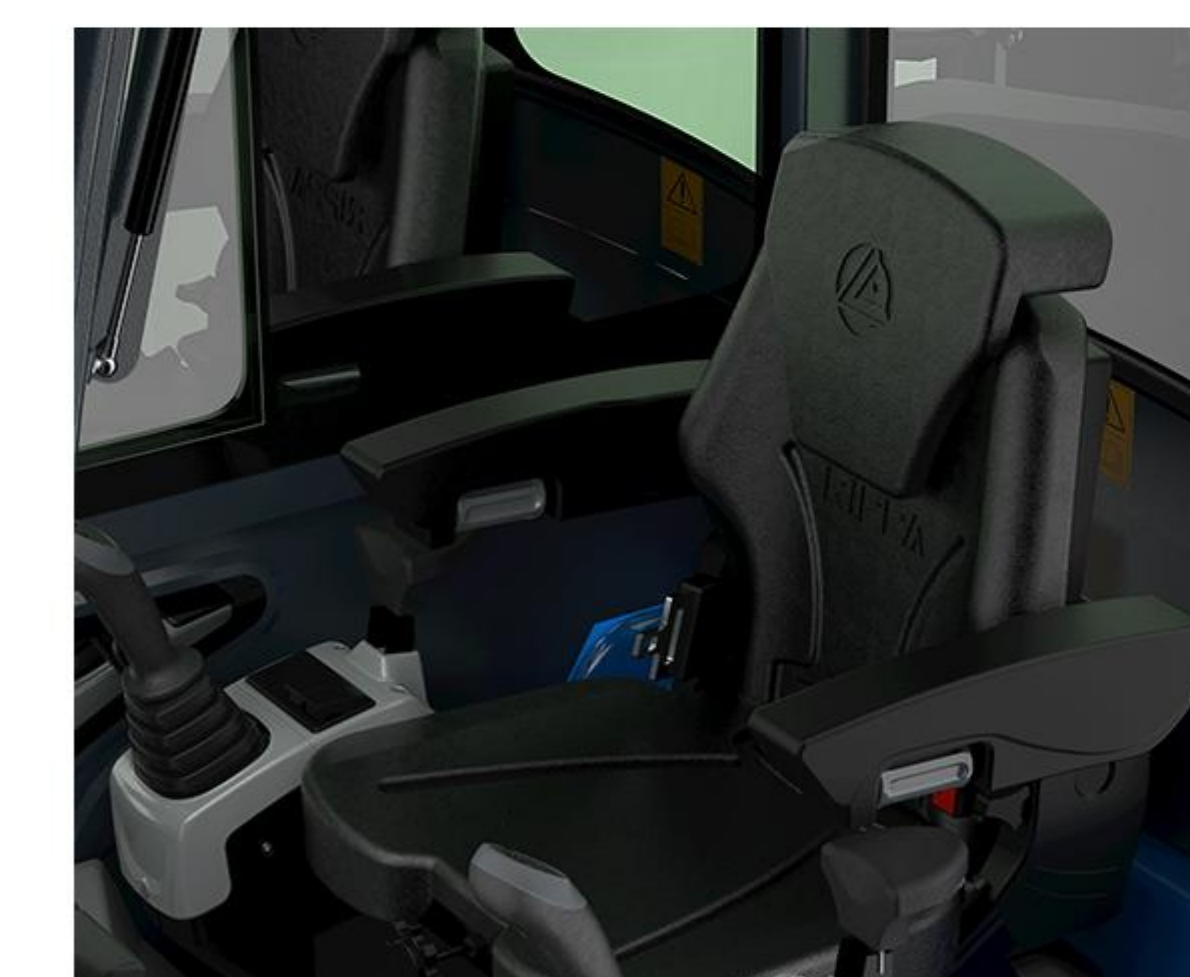
Air conditioner

The cab specification is equipped with an air conditioner as standard, providing a comfortable working environment at all times, even during the mid-summer and extreme cold seasons. hydraulic and fuel.



Shock-absorbing seats

The shock-absorbing seat is versatile, with adjustable armrests and headrest, a safety belt, and a storage box. The seat height, fore-aft distance, and backrest angle are all adjustable, giving you a unique experience while operating the excavator.



Grease fitting protection

The pointed butter nozzle is easier to butter, with stop protection, the excavator is not easy to damage the grease nozzle during operation, and the U-shaped stop is easier to clean up the mud.

MAINTENANCE

Smart maintenance and reliable durability.

Simply switch on and off

Double opening engine hood

Due to the lack of tools to significantly open the rear and right upper covers, daily inspections and maintenance around the engine and fuel system are simply possible. During the formal overhaul, the disassembly of the rear and right engine covers can be carried out quickly and accurately within just a few minutes, and the internal inspection and overhaul can be carried out quickly and accurately.

Sturdy front

The front end, root, swing pivot, and travel motor support of the boom subjected to heavy loads during homework are reinforced with cast steel materials to enhance strength. In addition, the front fulcrum is reinforced by a large diameter front fulcrum pin.



Air filter

Water tank

Diesel filter

Heat sink

Diesel tank

Battery

Oil tank

Oil filter

Oil cooler

> WE ARE S.G GROUP INDIA

we are located in Pune's Industrial Area, in India. This is a well-trusted Company that imports high-profile construction machinery and sales them. We are known and trusted for providing the customers of India the best sales of construction machines and after-sales services in India.

This is a number one company in trading of construction machinery company.

We are the Best solution for you. The company's employees are energetic and enterprising, constantly creating the legend and fame of the SG GROUP



Pune-Mumbai Road, Mehata Chambers Kasarwadi, Pune - 411 034

E mail : info@sggrouppune@gmail.com / [sggrouppune@gmail.com](mailto:info@sggrouppune@gmail.com)

Mob : 9850100284 / 9881820284

Web : www.sggrouppune.in

GST No : 27BAEPS0979R1ZP